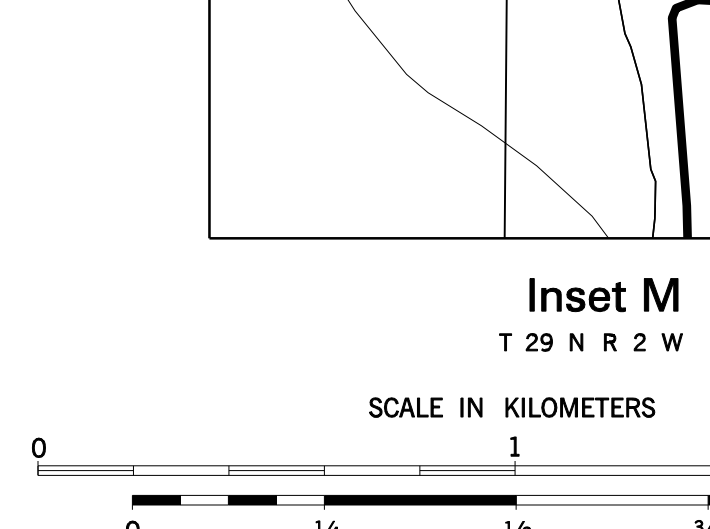
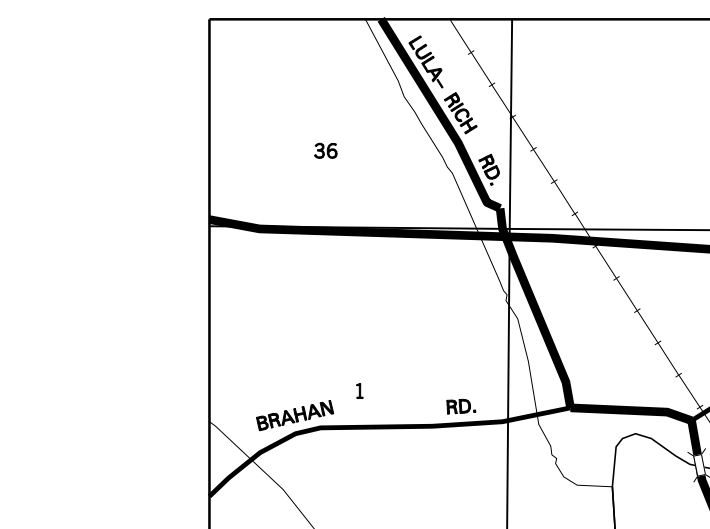
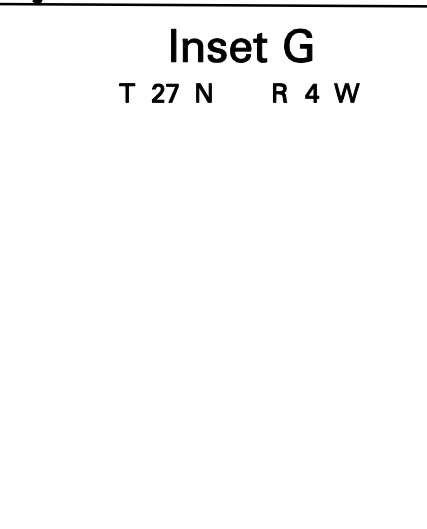
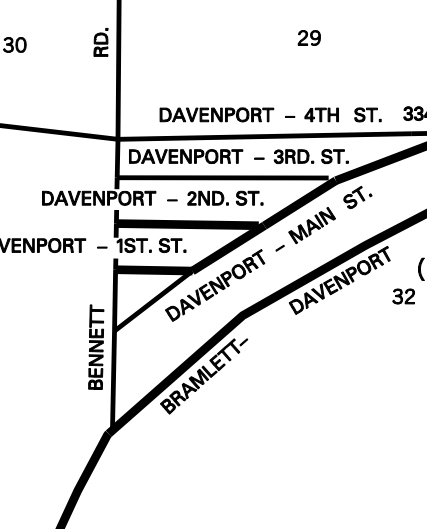
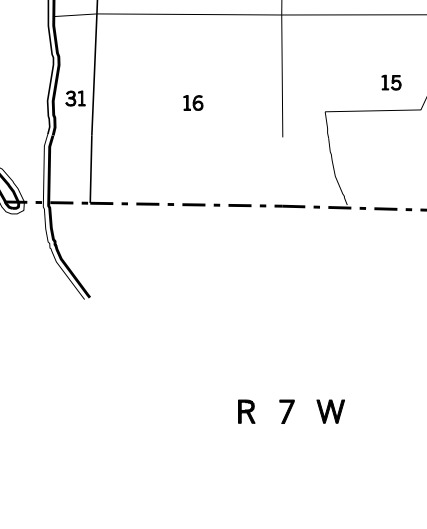
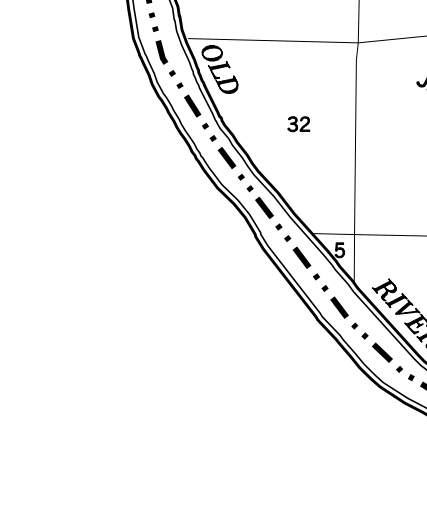
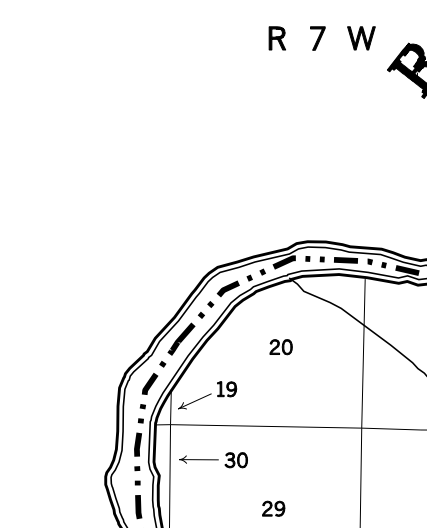
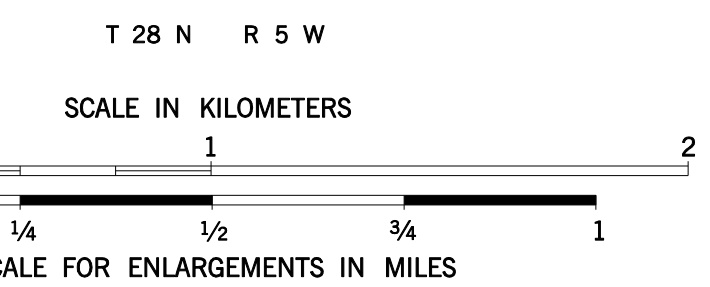
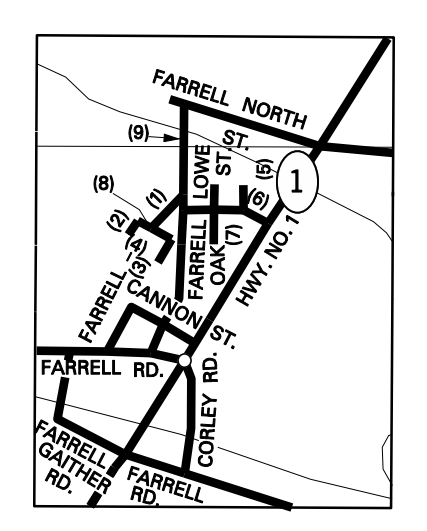
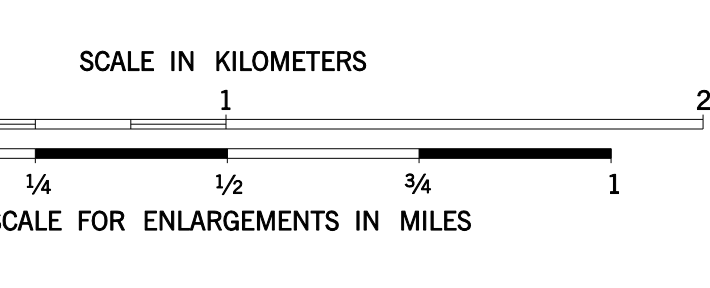
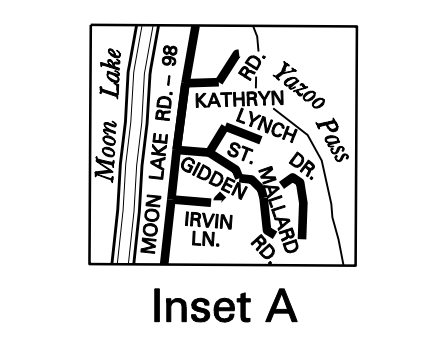
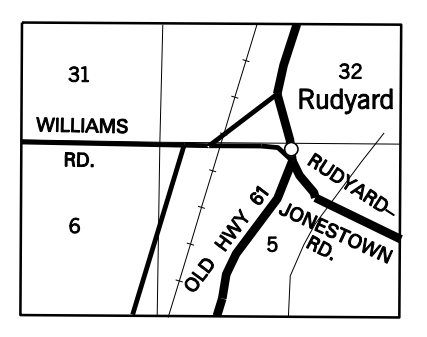


LEGEND

- ROADS AND ROADWAY FEATURES**
  - UNIMPROVED ROAD
  - GRAVEL
  - DIVIDED HIGHWAY
  - UNIMPROVED HIGHWAY
  - DIVIDED HIGHWAY
  - INTERSTATE SYSTEM
  - CITY STREETS
- NAVIGATION**
  - DOCK, PIER OR LANDING
  - LEVEE OR DIKE
  - LEVEE OR DIKE WITH ROAD
- CITY AND VILLAGE CENTERS**
  - COUNTY SEAT
  - OTHER CITIES AND VILLAGES
- MISCELLANEOUS**
  - TRIANGULATION STATION
  - BENCH MARK WITH ELEVATION
- PUBLIC SERVICE FACILITIES**
  - OBSERVATION OR LOOKOUT TOWER
  - HIGHWAY GARAGE
  - POST OFFICE
  - POWER PLANT
  - WEIGHT STATION
  - HOSPITAL
  - SEWAGE DISPOSAL PLANT
  - COMMUNITY CENTER OR TOWNSHALL
  - NATIONAL PARK GARAGE
  - FIRE STATION
  - PUBLIC LIBRARY
  - SANITARY LAND FILL
  - CORRECTIONAL INSTITUTION
  - POLICE STATION
  - GRAVEL PIT
- CONSERVATION AND RECREATION**
  - MOTEL OR HOTEL
  - CAMP OR LODGE
  - STONIC OR SCENIC SITE
  - FAIR GROUNDS OR RACE COURSE
  - SMALL PARK
  - GOLF COURSE OR COUNTRY CLUB
- INDUSTRIAL**
  - FACTORY OR INDUSTRY
  - SEASONAL INDUSTRY
- CHURCHES AND CEMETERIES**
  - CHURCH
  - CEMETERY
  - CHURCH WITH CEMETERY ADJACENT
- EDUCATION**
  - SCHOOL
- MISCELLANEOUS STRUCTURES**
  - ARMORY
  - FORT, ARMY CAMP
- BOUNDARIES**
  - STATE BOUNDARY
  - COUNTY BOUNDARY
  - BEAT LINE
  - CONGRESSIONAL TOWNSHIP
  - SECTION LINE
  - NATIONAL OR STATE FOREST
  - RESERVATION PARKS ETC.
  - URBAN AREA COMPACT
  - INCORPORATED PLACES
  - UNINCORPORATED DELIMITED AREAS
- RAILROADS**
  - RAILROAD STATION
  - RAILROAD ABOVE
  - RAILROAD BELOW
- AIRPORTS**
  - MILITARY AIRPORT
  - AIRPORT, LIMITED FACILITIES
  - LANDING AREA OR STRIP
  - INCLUDING PRIVATE AIR FIELDS
  - AIRPORT, COMPLETE FACILITIES
  - AIRWAY LIGHT BEACON
- DRAINAGE AND NATURAL FEATURES**
  - NARROW STREAM
  - DRAINAGE DITCH
  - LAKES AND RESERVOIRS
  - OVERFLOW LAND
  - MARSH OR SWAMP LAND



# GENERAL HIGHWAY MAP

# COAHOMA COUNTY

MISSISSIPPI  
© 2007

MISSISSIPPI DEPARTMENT OF TRANSPORTATION  
PLANNING DIVISION  
IN COOPERATION WITH THE  
U.S. DEPARTMENT OF TRANSPORTATION  
FEDERAL HIGHWAY ADMINISTRATION

**DATA SOURCES**  
2006 ASCS AERIAL PHOTOS  
1987 USGS DLM  
2005 MDOT FIELD INVENTORY  
2000 POPULATION 30,622  
2002 BEAT LINES

TRANSVERSE MERCATOR PROJECTION,  
STATE PLANE COORDINATE SYSTEM 1983

SCALE IN KILOMETERS  
SCALE IN MILES

MISSISSIPPI DEPARTMENT OF TRANSPORTATION  
COPYRIGHT LICENSE AGREEMENT  
With the purchase of this map, the Mississippi Department of Transportation grants you the right to use the copyrighted map as set forth below.  
This map is owned by the Mississippi Department of Transportation and is protected by the United States copyright laws and international provisions. You are required to pay the fee for any other copyright material used on this map in order to be able to use it in any way without modification of the terms of copyright by the Mississippi Department of Transportation is considered a permanent license in each instance.  
You have a non-exclusive right to reproduce and distribute the content of this map, in whole or in part, without modification, provided that you acknowledge the Mississippi Department of Transportation as the source of the map and that you do not place it in a permanent visible location on any reproduction.  
Any modification of a map with this agreement and resale your license to use, copy, and distribute the map is prohibited and is subject to prosecution under State and Federal laws.  
This agreement is governed by the laws of the State of Mississippi, U.S. Federal Law, and U.S. International Treaties.  
Should you have any questions concerning this agreement, please write: Mississippi Department of Transportation, Planning Division, Post Office Box 1950, Jackson, Mississippi 39215-1950.